

# Clarendon Artillery Lane

Artillery Lane,  
City,  
London, E1 7LS

1 BED



Situated in the heart of the City, just off Bishopsgate and close to Spitalfields market is Clarendon Artillery Lane, an older style building cleverly converted into self-contained one bedroom serviced apartments, ideal for short term lets in London.

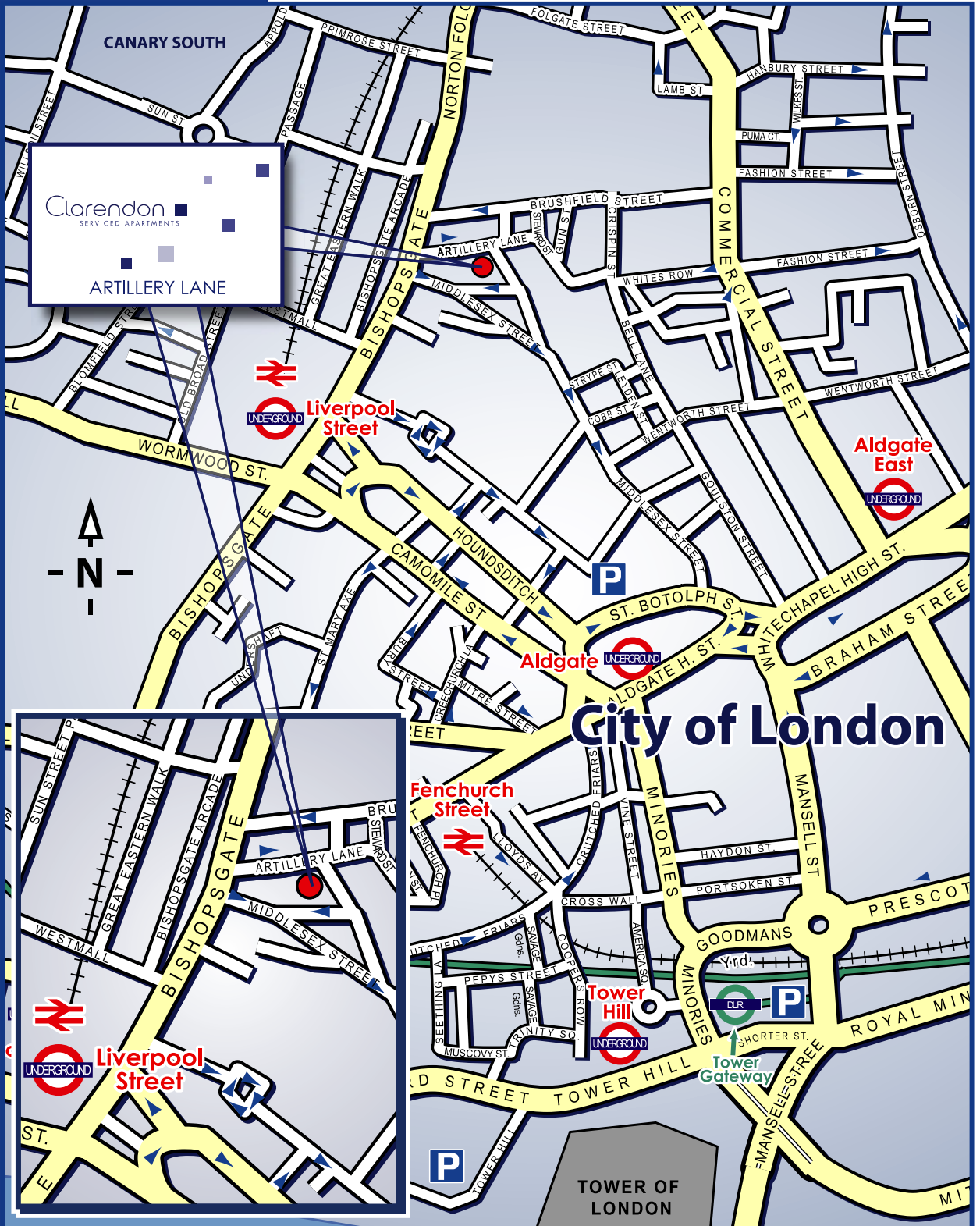
Each apartment has been cleverly designed to maximise space to create modern open plan living areas that are complemented by original retained features of the building such as wooden beams and feature redbrick walls. Each 1 bedroom apartment is tastefully decorated providing guests a stylish base to call home whilst staying in London. Fully equipped kitchens featuring integrated appliances provide all the necessary modern day conveniences for self-catering guests while comfortable sleeping areas and adjoining tiled shower rooms

complete the accommodation.



The location is ideal for city based workers seeking the best of both worlds; a place to call home close to city offices and

a prime location in close proximity to the cosmopolitan 'Spitalfields Market' area with its famous Sunday market and array of boutique shops and street style cafes.



# Travel and Transport

The area is served by a number of tube stations but the most central and well-connected is Liverpool Street Station, which serves the Central, Circle, Hammersmith & City and Metropolitan Lines.

It's connecting train station is the busiest commuter station in London and the overland trains serve destinations in the East of England as well as the North-Eastern suburbs of London and Stansted Airport with the Stansted Express.

Another local hub is the small and hassle free London City Airport, which focuses on European destinations.





Bishopsgate is named after one of the original seven gates in the London Wall. The location of this former gate is marked by a carved stone Bishop's mitre fixed high upon a building. The London wall encloses an area now known as The City. With boundaries which have remained almost unchanged since the Middle Ages, The City vies with New York as the financial capital of the world; numerous banking and insurance services have their headquarters there.



Bishopsgate boasts some diverse and very fine examples of architecture and design, many businesses and offices being housed in innovative or historical buildings. The Bank of England moved to its present site on Threadneedle Street in 1734! The 1970's saw the erection of the first skyscrapers, which included the 600 foot, 47 storey Natwest Tower, which have now become characteristic of the area in a bid to maximize space.



The area is steeped in history harking back to Roman times which is evident in many of the street names, Mitre Street, Wood Street, Bread Street, Milk Street and Cloak Lane and let us not forget Jack the Ripper who terrorised the area in the 1800's. Now-a-days fashionistas and artists rub shoulders with businessmen and the Bangladeshis of Brick Lane in this bustling and thriving cultural melting pot.



Images: Camden Council

There is a wealth of things to do in this area all appealing to differing tastes and budgets.

If you are interested in architecture then feast your eyes! The Lloyd's building, is home to the insurance institution and sometimes referred to as the 'Inside-Out Building' on account of the fact that all the services for the building, such as ducts and lifts, are relegated to the exterior of the building creating maximum space in the interior. Another famous building in the area is The Gherkin, or more officially 30 St Mary Axe, which has become one of the iconic symbols of London and London's modern architecture. The area displays a brilliant juxtaposition of architecture old and new....just keep looking up!

.... And you will stumble upon the awesome, Baroque St Paul's Cathedral, which like much of London was designed by Sir Christopher Wren after the Great Fire of London. Visitors can climb the 271 steps into the famous dome and enjoy panoramic views over London and at the base of the dome you can revel in the remarkable acoustics of the Whispering Gallery, where a tiny sound such as a 'whisper' can be heard along the curved wall over 100ft away.

If you are in need of some green and space after all the crowds and concrete there are a couple of local parks that will satisfy. Postman's Park is just North of St Paul's Cathedral and earned its name due to its proximity to the General Post Office and the park being extremely popular with the GPO's workers.

Perhaps you are looking for slightly more active fun – if so head to All Star Lanes on Brick Lane for a relaxed evening of American style bowling.

Creating a community spirit and again offering activities, such as ice skating in winter and bowling in the summer months, Broadgate is a largely pedestrianised office and retail space opposite Liverpool Street Station.

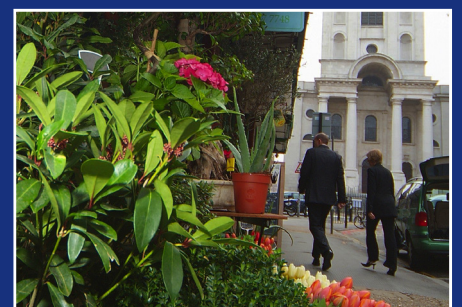
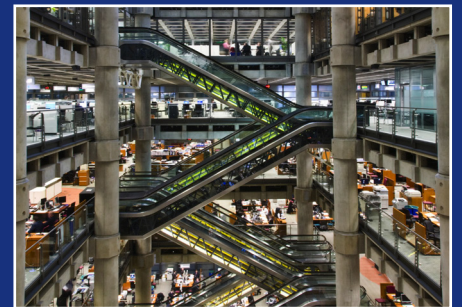




Image © Roelof Bakker

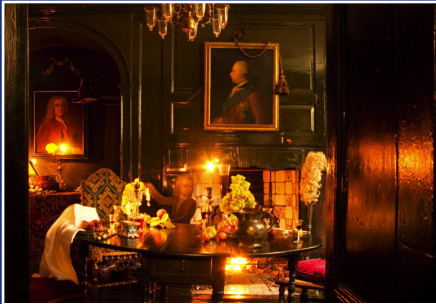


Image © Roelof Bakker



Bishopsgate Institute, again opposite Liverpool Street Station, is a great cultural space, with an arts and crafts façade and 19th century tiling, a Great Hall and a Grade II listed public reference library inside, it holds events which include music concerts, cultural events and a variety of educational and leisure offerings.

Dennis Server's House is an eccentric and truly unique museum, somewhat off the beaten track. Visitors will experience a 'still-life drama', the idea being that on entering the old Huguenot house you have just interrupted a family of silk weavers. Always just out of sight, they haunt the 10 rooms through the casual placement of objects and the use of sound. This is a snapshot of Spitalfields' life between 1724 and 1914.



wrong.

freak

## Dining



### Tayyabs

83-89 Fieldgate Street, E1 1JU

[www.tayyabs.co.uk](http://www.tayyabs.co.uk)

Starting life as a small café Tayyabs has become the dazzling and busy restaurant you see today, serving the finest Punjabi Cuisine, spice curries, and the highly recommended mixed grill and lamb chops! This is some of the cheapest and best Indian in London.



### St John Bread & Wine

94-96 Commercial Street, E1 6LZ

[www.stjohngroup.uk.com](http://www.stjohngroup.uk.com)

Open from morning till night this bakery-come-wine shop, come dining room is open three meals a day and seven days a week. Their ethos is to use indigenous, seasonal ingredients and 'the whole beast', expect to find trotters and cheek on the menu.

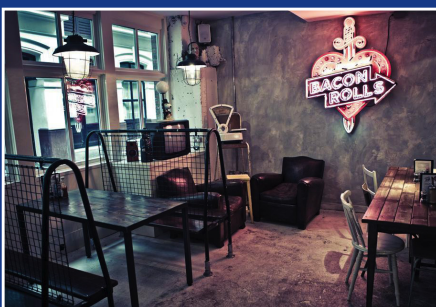


### Leon

3 Spital Square, E1 5DW

[www.leonrestaurants.co.uk](http://www.leonrestaurants.co.uk)

This is fast food but not as you know it! Leon's food is naturally full of flavour; they use seasonal food full of goodness, spices, fresh herbs and olive oil, and focus on nutrition and sourcing their ingredients from farms they trust.



### The Breakfast Club

12-16 Artillery Lane, E1 7LS

[www.thebreakfastclubcafes.com](http://www.thebreakfastclubcafes.com)

Subtly tucked away on a side street, the Breakfast Club is anything but subtle inside. The décor is relaxed and quirky with features like their neon 'Sex, Drugs, & Bacon Rolls' sign hanging on the wall and their breakfast menu stretches the imagination! They also do lunch, dinner and take away.



### The Real Greek

6 Horner Square, E1 6EW

[www.therealgreek.com](http://www.therealgreek.com)

This tapas-style restaurant serves authentic Greek food, ideal for sharing and it won't break the bank. At this branch of the small chain they have a deli at the front serving delicious Greek specialties open Mon-Fri 12 – 14:30pm, ideal for a grab and go lunch.



## La Chapelle

35 Spital Square, E1 6DY

[www.galvinrestaurants.com](http://www.galvinrestaurants.com)

Gaining a Michelin star only a year after opening La Chapelle is housed in a chandelier-ed, former Victorian School. The service is impeccable and the food incredible, the conversation stopping crab lasagna is a must!

## Canteen

2 Crispin Place, E1 6DW

[www.canteen.co.uk](http://www.canteen.co.uk)

Canteen's motto is 'honest seasonal food, nationally sourced, skillfully prepared and reasonably priced' and they deliver on every count! This is Great British food.

## Loungelover

1 Whitby Street, E1 6JU

[www.loungelover.co.uk](http://www.loungelover.co.uk)

Tasteful decadence! Lounge Lover has to be seen to be believed – you could never tire of the eccentric, beautiful interiors, the 10 pages of innovative and delicious cocktails and the Japanese style tapas! Sensory overload!

## Poppies Fish & Chips

6-8 Hanbury Street, E1 6QR

[www.poppiesfishandchips.co.uk](http://www.poppiesfishandchips.co.uk)

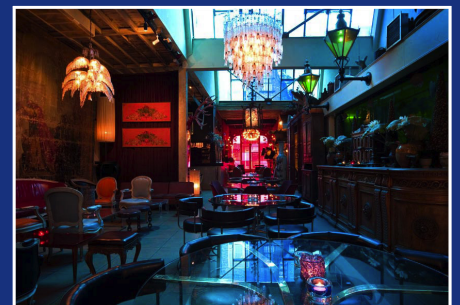
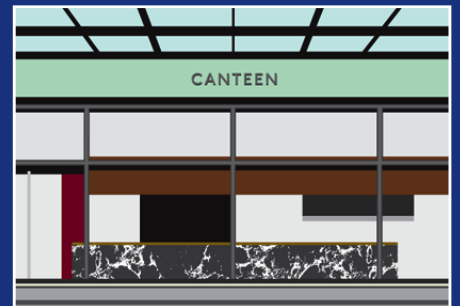
Serving fish and chips since 1945 today's restaurant is still reminiscent of that era with waitresses wearing head scarves and records decorating the walls, Poppies authentic and ethically sourced fish is served in crunchy batter, with golden chips and classic mushy peas.

## Al Volo

2 Ely's Yard, E1 6QR

[www.alvolo.co.uk](http://www.alvolo.co.uk)

Al Volo is a modern Italian restaurant and bar which offers a friendly atmosphere and dishes ranging from handmade fresh pasta, pizza, salads to fine elaborate courses. Lunches have some great offers and they also offer deliveries.





There are a scattering of high street shops and more luxury brands in the area catering for the city workers and their wardrobes.

If you like a bit of history while you shop then Leadenhall is the place for you, a covered market place it is one of the oldest markets in London dating back to the 14th Century. It primarily sells fresh food though there are now a number of commercial retailers selling clothes.

Spitalfields Market is located just a couple of minutes from Liverpool Street Station, covered by an ornate Fosters & Partners designed glass canopy, it is rife with market stalls and independent shops and is now open every day of the week with Saturdays being the busiest day. It is famous for cutting-edge fashion and interiors, original artworks and food.

# Useful Numbers

## Medical

NHS Direct 24 Hour nurse-led helpline

**T** 111 or [nhs.uk](https://www.nhs.uk) (to find nearest dental/doctors services)

Private medical services

**T** 0844 257 0345 or [doctorcall.co.uk/visitingdoctor](https://www.doctorcall.co.uk/visitingdoctor)

## Travel

For general London travel information:

**T** 0843 222 1234 or [tfl.gov.uk](https://www.tfl.gov.uk)

For National Rail Enquiries

**T** 08457 48 49 50 or [nationalrail.co.uk](https://www.nationalrail.co.uk)

## Taxis

Addison Lee Cabs **T** 0844 800 6677

ComCab **T** 020 7908 0286

Dial-A-Cab **T** 020 7426 3420

## Leisure

LondonTickets Line

**T** 0207 492 1606 or [londonticketsline.entstix.com](https://www.londonticketsline.entstix.com)

Gyms [fitnessfirst.co.uk](https://www.fitnessfirst.co.uk)  
[virginactive.co.uk](https://www.virginactive.co.uk)

Cinemas [timeout.com/films/listings](https://www.timeout.com/films/listings)

## Clarendon Serviced Apartments

**T** 01784 489 200

(Mon-Fri 09:00 – 18:00) or

[clarendonuk.com](https://www.clarendonuk.com)

If you wish to extend your stay  
please email

[reservations@clarendonuk.com](mailto:reservations@clarendonuk.com)

To contact guest services during your  
stay email

[guestservices@clarendonuk.com](mailto:guestservices@clarendonuk.com)

In the event of an

### OUT OF HOURS EMERGENCY

please call the **Duty Manager**

**T** 0870 0427 478

**FOR EMERGENCY SERVICES –  
FIRE/AMBULANCE/POLICE –  
DIAL 999**

If you require fast NHS medical attention  
but it is not a 999 emergency please  
call **111**.